



Northumberland LEADER

The LEADER Approach 2014-2020

What is LEADER?

An EU Initiative: Integrated local development in rural areas

Managed in England by Defra/RPA

Area based and bottom up

Public-private partnerships – Local Action Groups (LAG)

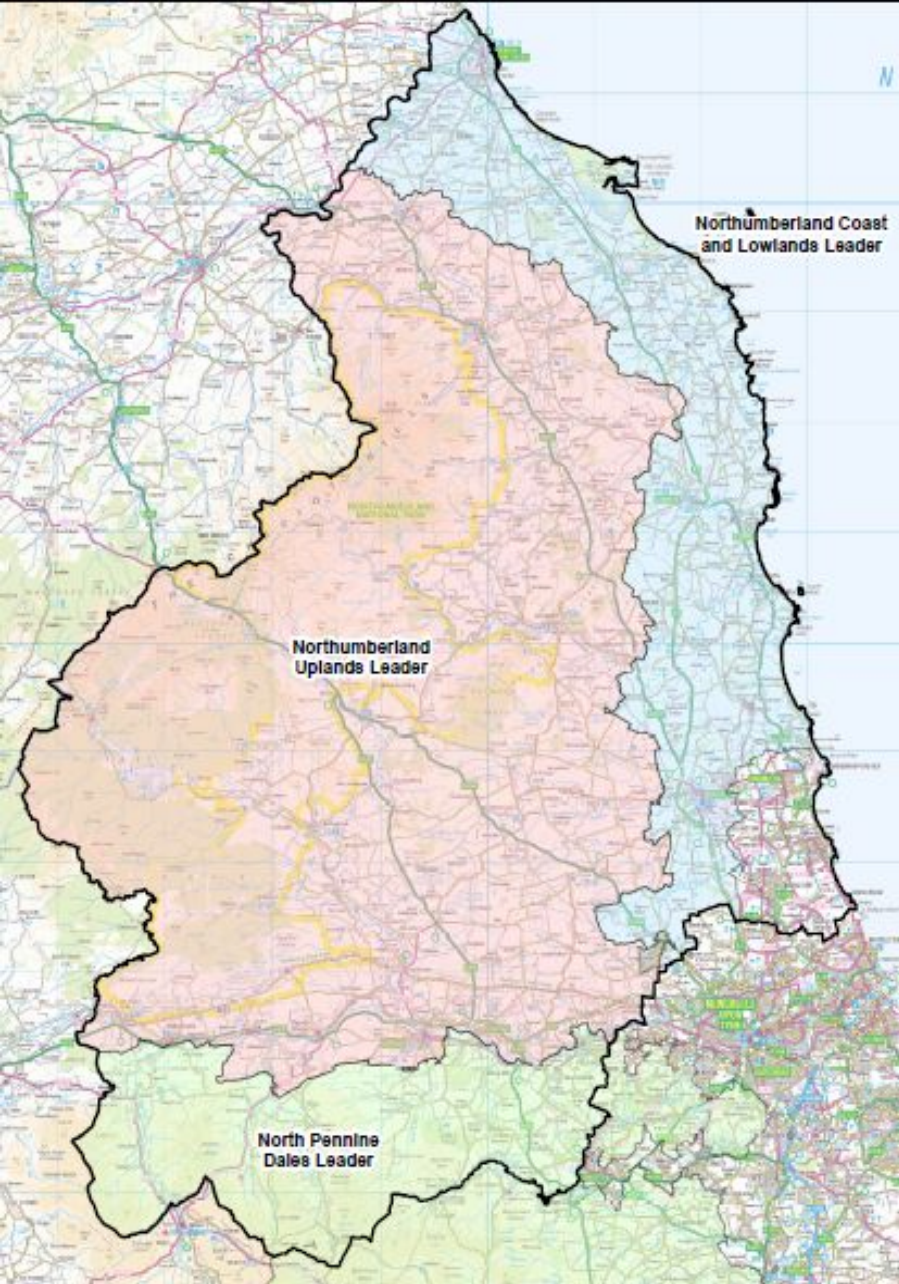
Cross Cutting

Multi Sectoral

Cooperation & Networking

Grants offered from 40% intervention
(up to 100% for not-for-profit) – minimum grant £2,500

Northumberland LEADER



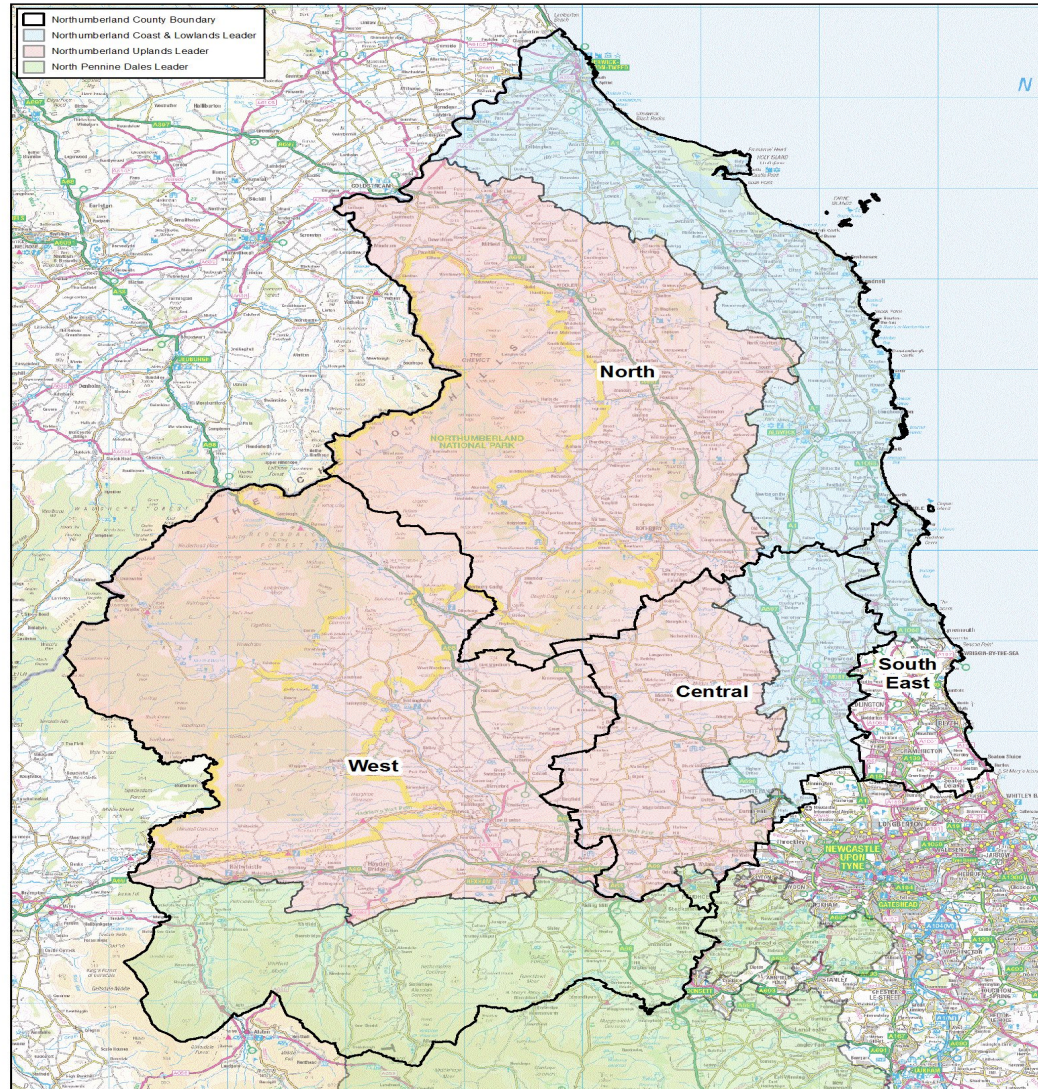
3 LEADER areas (Local Action Groups)

Northumberland Coast and Lowlands (€2.481m)

Northumberland Uplands (€2.351m)

North Pennine Dales (€2.667m)

Leader Areas & Area Committees Northumberland



Published July 2015. Scale: 1:440 000
Produced by the Strategy & Change Team, Information Service, Northumberland County Council.
© Crown Copyright. All rights reserved. NORTHUMBERLAND COUNTY COUNCIL - OS Licence No. 100049048.



North Area

Coast & Lowlands

Alnwick
Amble West w. Warkworth
Bamburgh
Berwick East
Berwick North
Berwick West w Ord

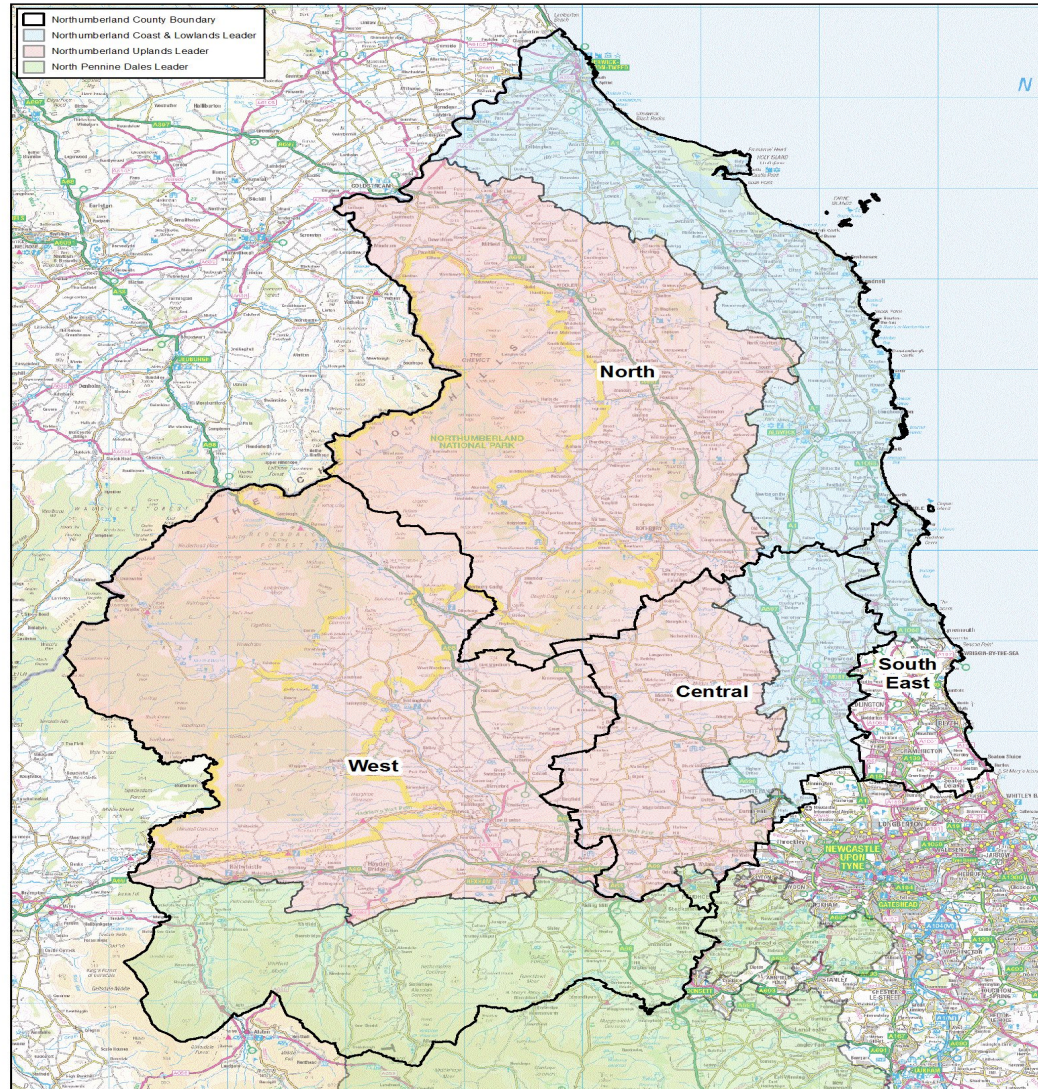
Shared

Norham & Islandshires
Shilbottle

Uplands

Longhoughton
Rothbury
Wooler

Leader Areas & Area Committees Northumberland



Published July 2015. Scale: 1:440 000
Produced by the Strategy & Change Team, Information Service, Northumberland County Council.
© Crown Copyright. All rights reserved. NORTHUMBERLAND COUNTY COUNCIL - OS Licence No. 100049048.



Central Area

Coast & Lowlands

Morpeth Kirkhill

Morpeth North

Morpeth Stobhill

Pegswood

Ponteland East & Stannington

Shared

Longhorsley

Uplands

Bywell

Ponteland North

Ponteland South w Heddon

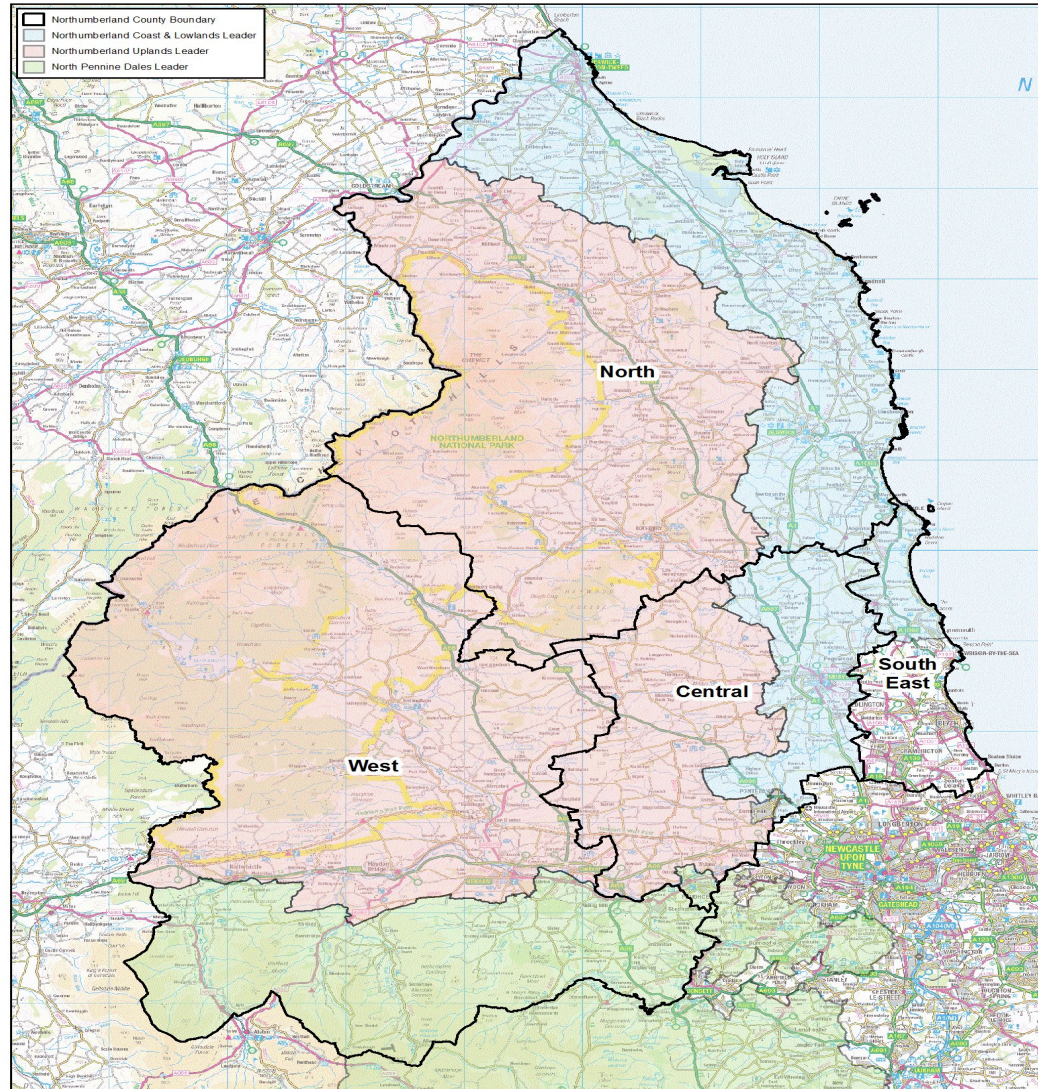
Ponteland West

North Pennine Dales

Prudhoe North

Prudhoe South

Leader Areas & Area Committees Northumberland



Published July 2015. Scale: 1:440 000
Produced by the Strategy & Change Team, Information Service, Northumberland County Council.
© Crown Copyright. All rights reserved. NORTHUMBERLAND COUNTY COUNCIL - OS Licence No. 100049048.



West Area

Uplands

Bellingham

Humshaugh

Haydon & Hadrian

Hexham Central w. Acomb

Hexham East

Hexham West

Shared

Corbridge

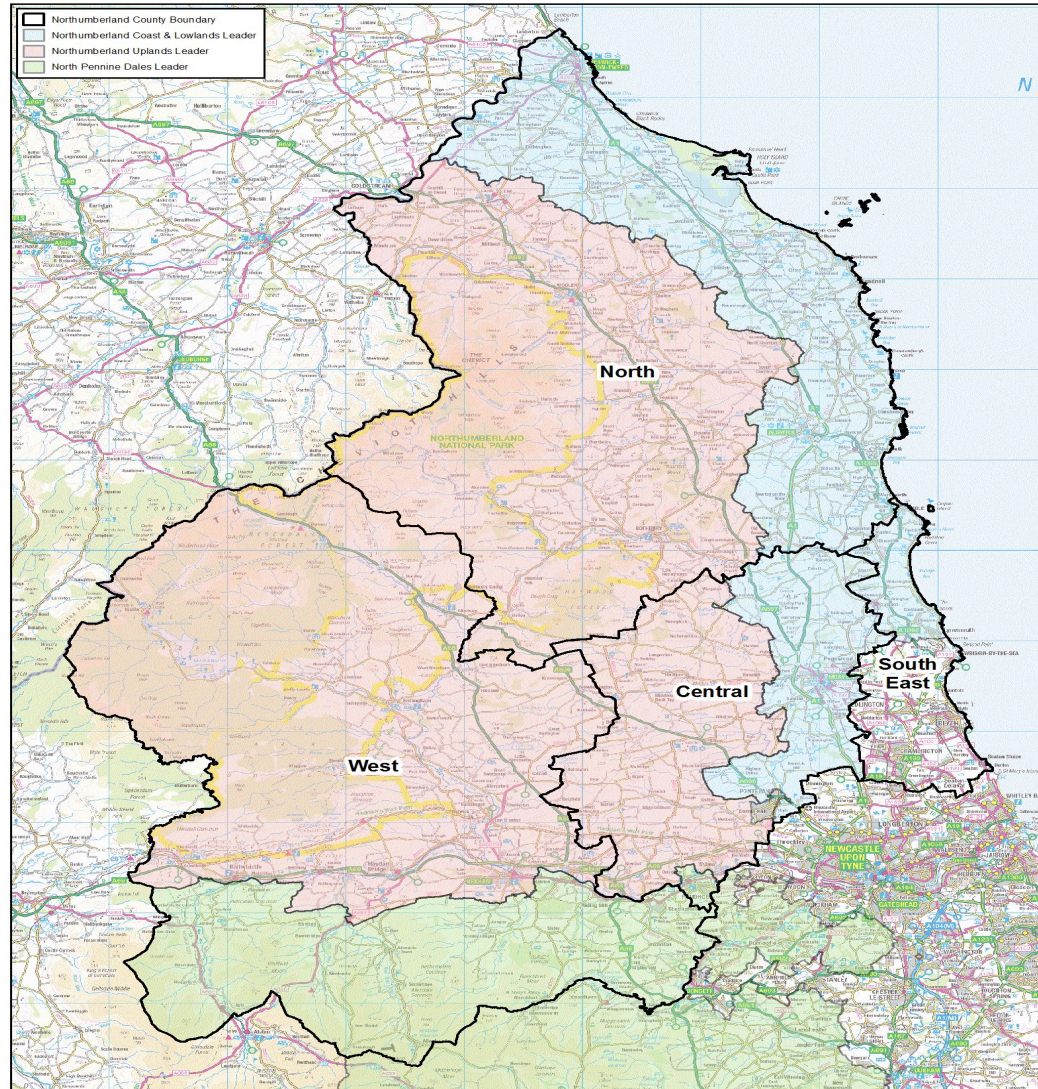
Haltwhistle

North Pennine Dales

South Tynedale

Stocksfield & Broomhaugh

Leader Areas & Area Committees Northumberland



Published July 2015. Scale: 1:440,000
Produced by the Strategy & Change Team, Information Service, Northumberland County Council.
© Crown Copyright. All rights reserved. NORTHUMBERLAND COUNTY COUNCIL - OS Licence No. 100049048.



South East Area Coast & Lowlands

Amble
Druridge Bay
Lynemouth

An opportunity for Northumberland to deliver rural development through local business and community led projects



LEADER 2014-2020

Funding

- 70% of funding will directly support economic growth and job creation
- Mainly funding for capital purchases
- 30% funding for 'Community' type projects which will contribute to indirect economic growth

Six Key Themes

- Micro & small enterprises and farm diversification
- Support for rural tourism
- Increasing forestry productivity
- Increasing farm productivity
- Provision of local services
- Culture and Heritage activities

LEADER in Northumberland

1994-1999

LEADER II programme ran in North Northumberland

2000-2006

LEADER+ programme operated in North Pennines and North Northumberland

2007 - 2013

Northumberland Coast and Lowlands successfully bids to be a LEADER area. LAG members recruited and project delivery starts, supports 75 projects with almost £2 million funding.

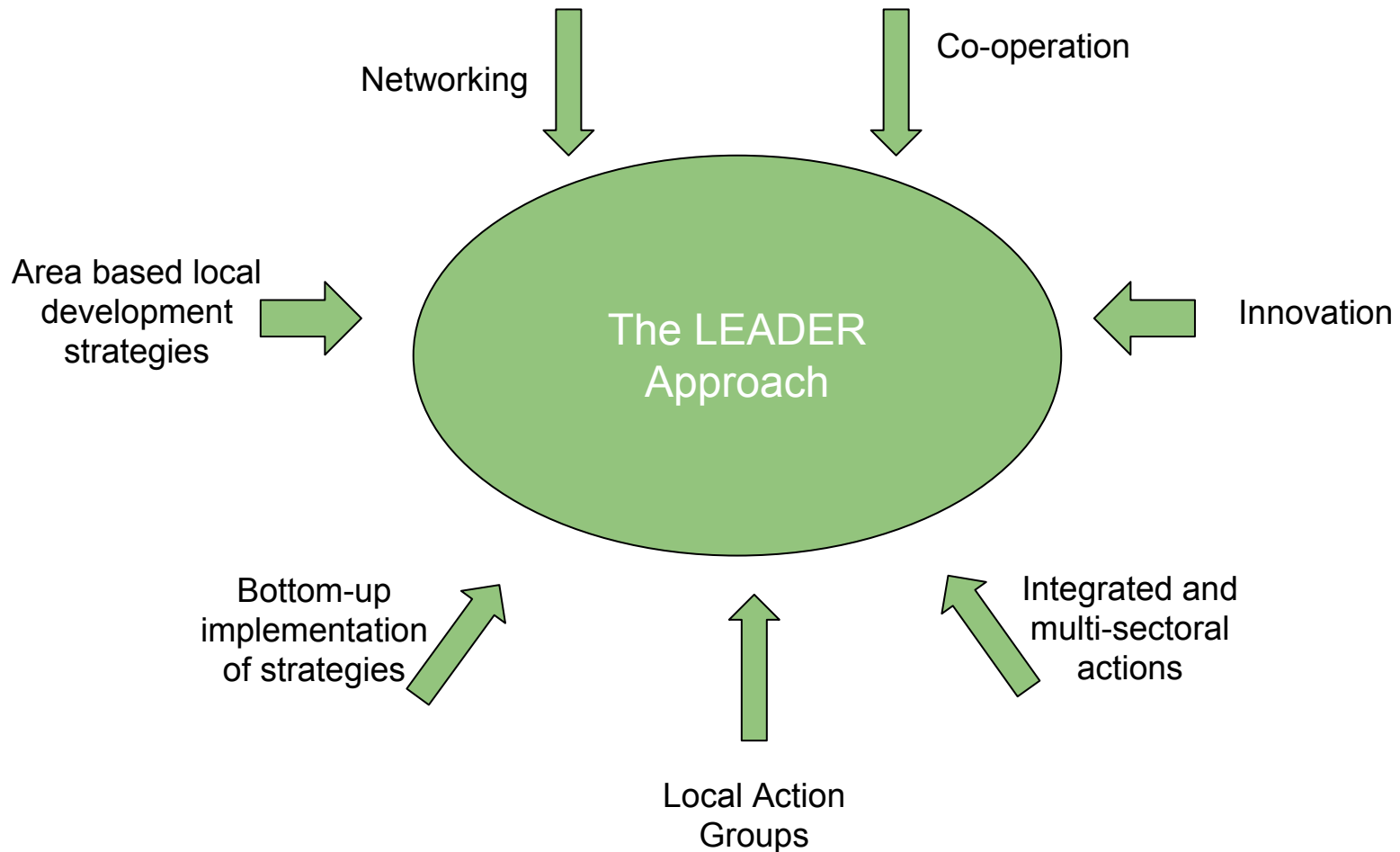
2014

LAG members work on Local Development Strategy during transition and with NCC are successful in bid for funding.

2014 - 2019

Coast and Lowlands has supported 60 projects and committed £1.769 million funding

Principles of the LEADER Approach



The Local Action Group



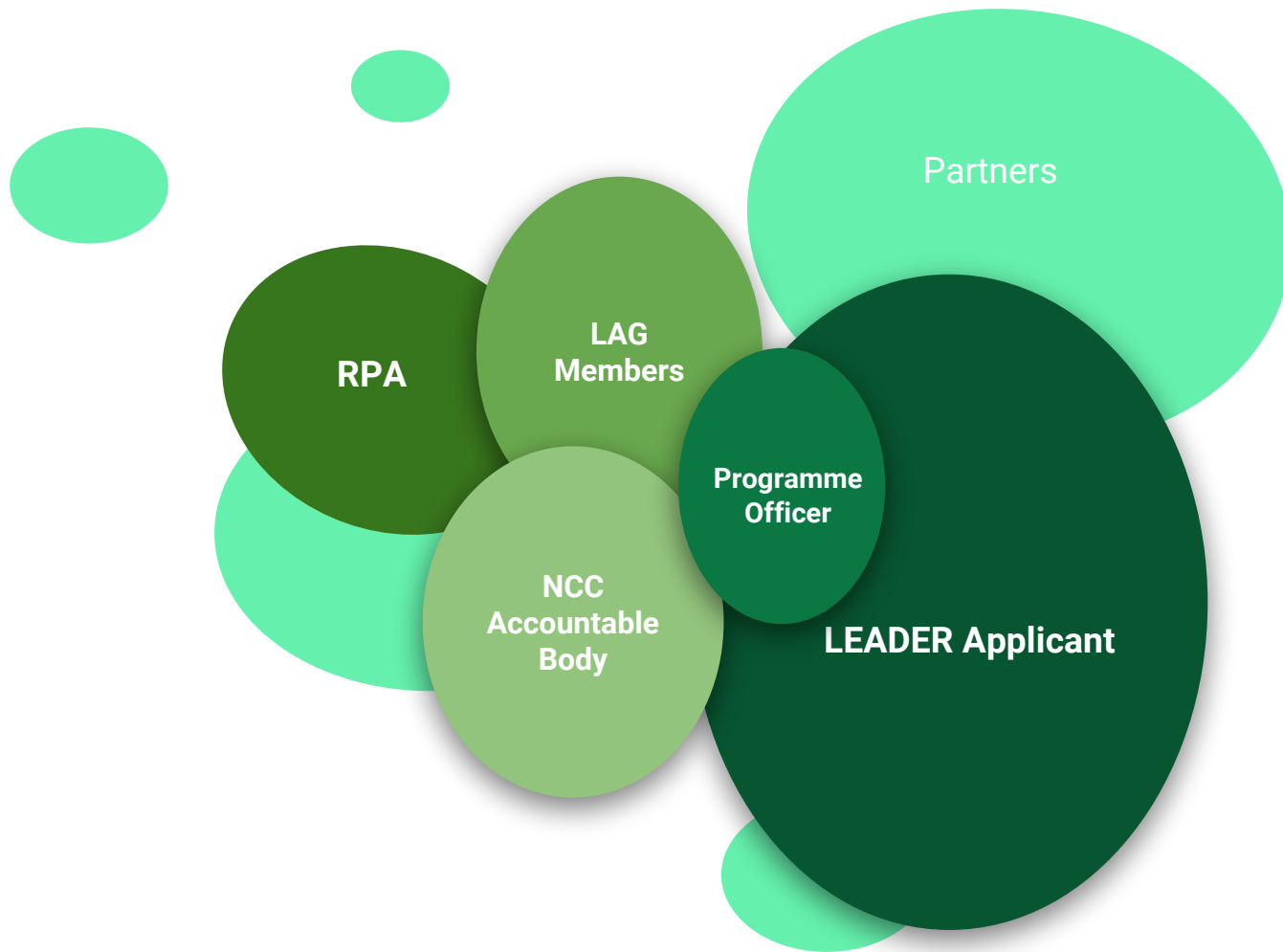


Local Action Group Membership

LAGs adapt to fit local needs

- LAGs have a mix of public, private and community interests
- No single interest group having more than 49% of voting rights.

LEADER Delivery



Headline Figures

Programme Expenditure

Number of projects supported	60
Number of Jobs created	137
Total project investment	£4,243,151.85
LEADER Grant awarded	£1,769,852.42
Private sector leverage	£2,473,299.43

Average Grant per job
£12,918.63

Micro & Small Business



LEADER
promotes
enterprise
innovation and
opportunity

Iron Age hill fort at Mid Hill,
Northumberland National Park.
© English Heritage

**LEADER recognises the
need to conserve and
manage our Environment
and Heritage through
effective and proactive
funding.**

**Culture and
Heritage**

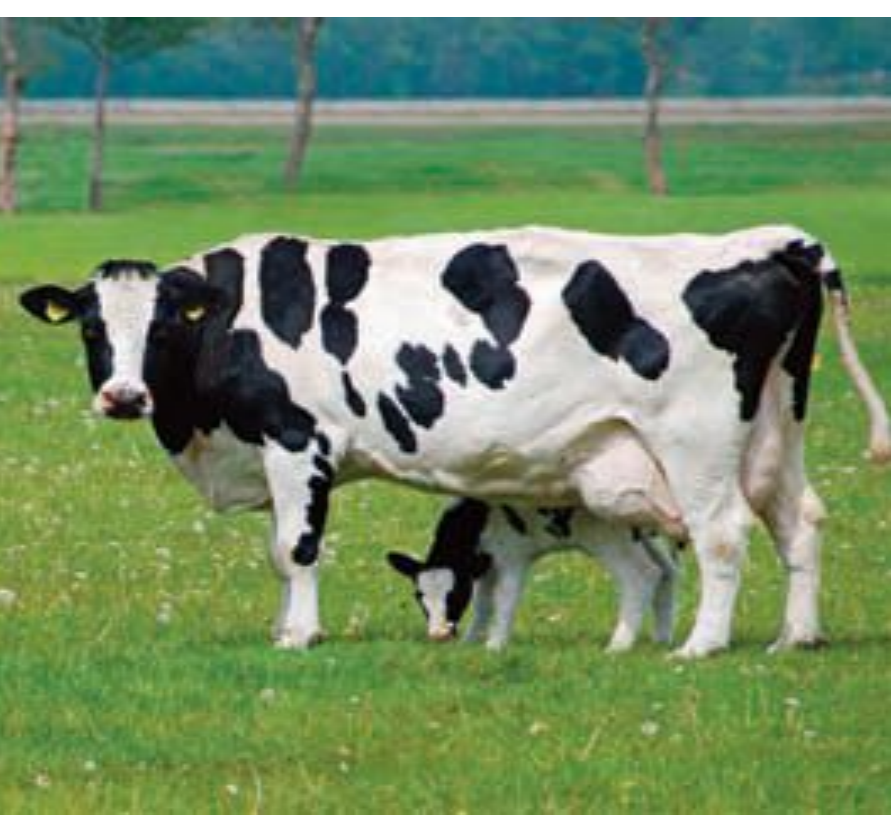


Rural Services

LEADER works with partners to support and develop local community projects



Farming



LEADER supports a diverse and effective agricultural sector as part of a living local landscape

Forestry

Managing and creating renewable natural resources for economic opportunity, for wildlife and recreation



Rural Tourism

LEADER offers the opportunity to build sustainable leisure activities and increase national awareness of Northumberland





The LEADER Process

- LEADER Programme Officer supports applicant in developing Outline Application (OA).
- OA assessed by LAG to confirm eligibility and fit with LAG Local Development Strategy. If successful at OA stage applicant submits Full Application.
- Full Applications undergo Technical Appraisal (TA) by the Accountable Body (NCC)
- Appraised Full Application considered by LAG based on the project fit with LEADER Programme and LAG LDS
- Process takes 3-4 months from OA to final decision

Application Flow

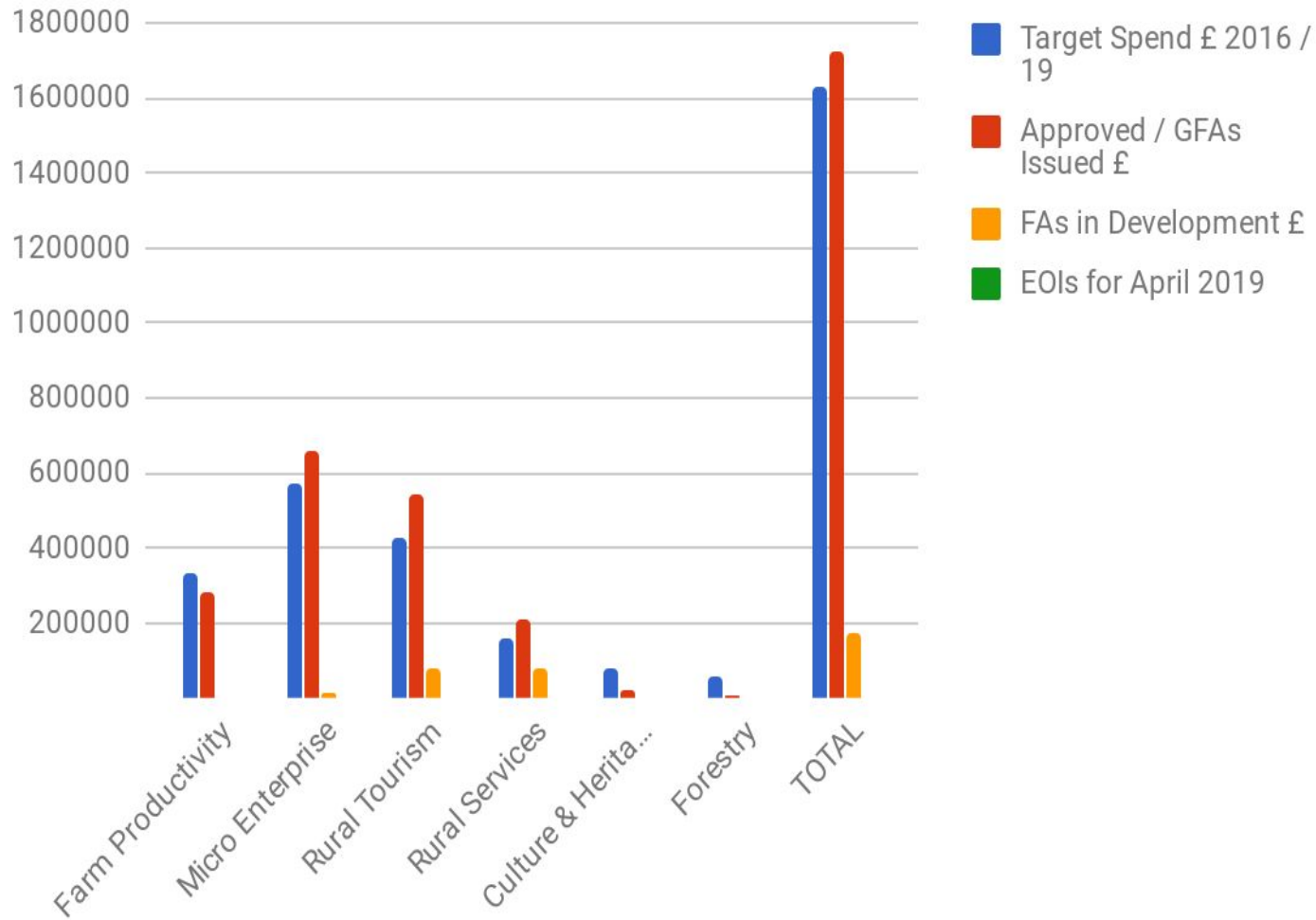
**60 GFAs
approved**

70 FAs received

123 EOs submitted

Over 200 Enquiries received

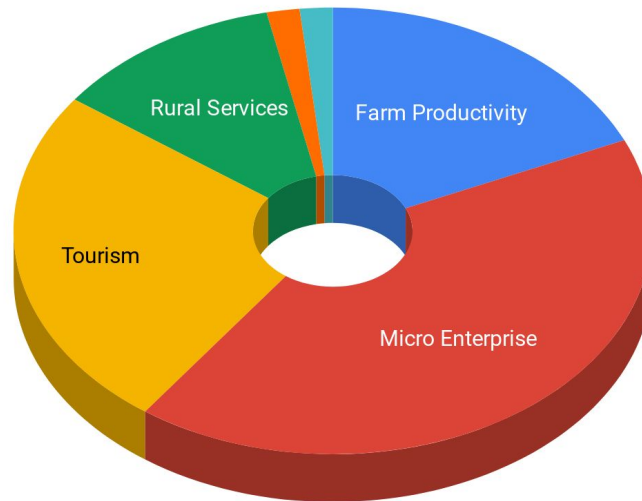
Coast and Lowlands Funds Committed



Headline Figures

Number of Projects Supported by Theme

- Farm Productivity
- Micro Enterprise
- Tourism
- Rural Services
- Culture & Heritage
- Forestry

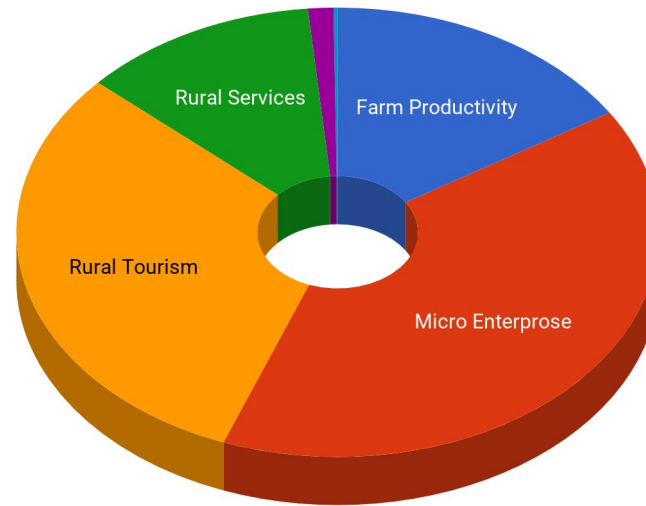


Theme	Number
Farm Productivity	11
Micro Enterprise	25
Tourism	15
Rural Services	7
Culture & Heritage	1
Forestry	1

Headline Figures

Commitment by Priority Theme

- Farm Productivity
- Micro Enterprose
- Rural Tourism
- Rural Services
- Culture & Heritage
- Forestry

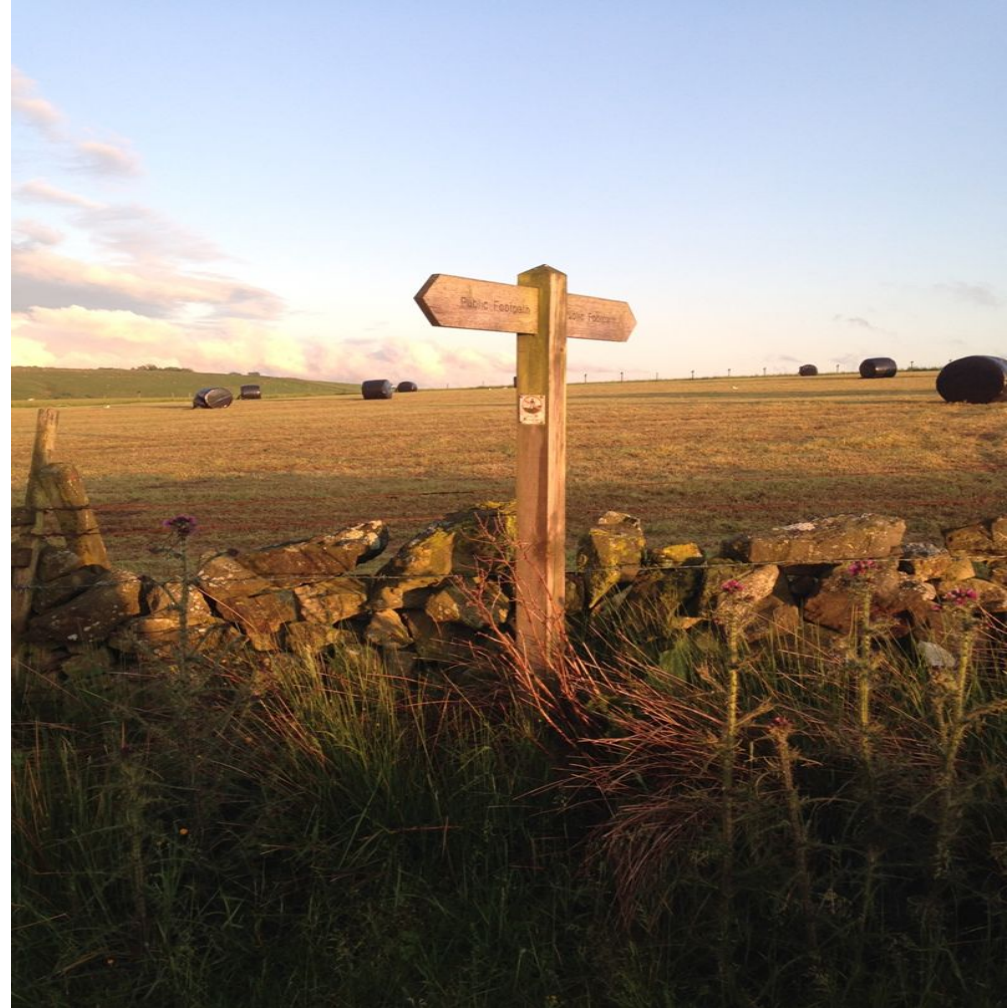


Farm Productivity	£284,229.93
Micro Enterprise	£701,903.99
Tourism	£545,572.72
Rural Services	£210,905.78
Culture & Heritage	£22,638.98
Forestry	£3,600.00

The Real Measure of the LEADER Approach

LEADER is about real people in real places having a real impact on their communities and businesses

- ***Communities and Businesses with attitude and aspirations to develop and grow***
- ***LAG Members engaged and active***
- ***Accountable Bodies and Defra / RPA supporting and enabling rural development***
- ***Projects delivering with drive and determination***



Learning from the LEADER Approach

- **If it ain't broke...** - retain community-led rural support for both upland and lowland areas, it's proven to work.
- **Mind the Gap!** – make decisions now to fund activity, otherwise key community infrastructure will be lost.. We have a reserve list of projects in our LEADER area, which we could bring forward with transitional funding.
- **A place for Rural** – we need a Rural Prosperity Fund as part of the proposed Shared Prosperity Fund.
- **Maintain or improve levels of funding** - and ensure geographical spread is more complete for rural areas.



LEADER has served rural

Northumberland well for many years

LEADER will finish, but rural support

must continue

Contact

Northumberland Coast & Lowlands LEADER
Website: www.northumberland.gov.uk/lowlands

Ivan Hewitt - Programme Officer

MB: 07920 184617

Email: ivan.hewitt@northumberland.gov.uk

QUESTIONS

